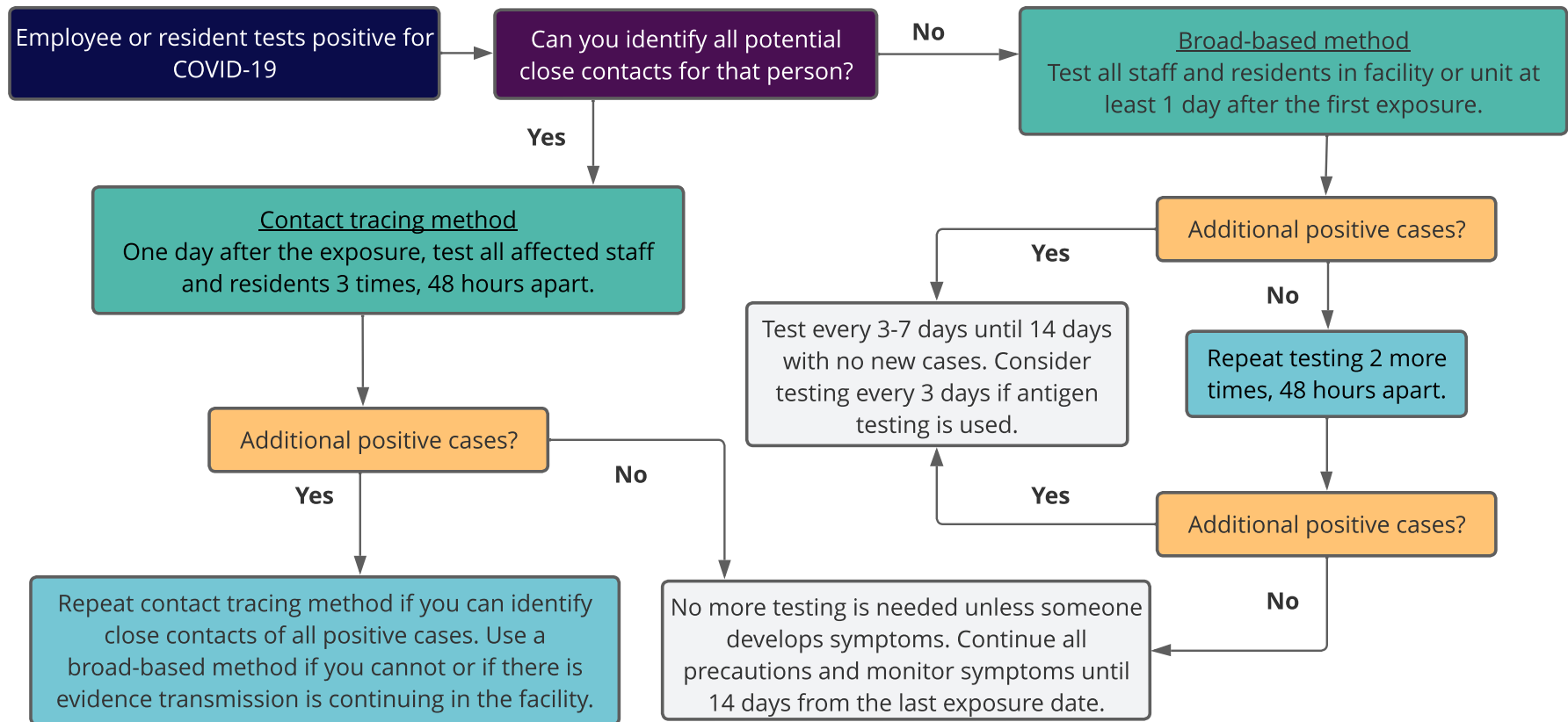


Outbreak response in long-term care



Additional notes:

- Contact tracing identifies all employees with **higher risk exposures** and all residents who had **close contact**. Broad-based testing includes testing the whole facility or unit.
- Individuals who reside or work in the facility should wear a mask for 14 days from the last positive COVID-19 case.
- Individuals exposed to COVID-19 should wear masks in the facility for 10 days after exposure. People who develop symptoms or test positive should isolate right away. Those who have symptoms but test negative with a rapid antigen test should have a PCR test right away. Or repeat the rapid antigen test after 48 hours. You can rule out COVID-19 if the repeated test is negative.
- Quarantine or work restrictions are not recommended after an exposure to COVID-19, unless the person can't be tested, can't wear a mask, is immunocompromised, or lives or works on a unit with people who are immunocompromised or the unit is experiencing ongoing transmission.
- Vaccination prevents severe illness, but it does not impact quarantine, isolation, or testing recommendations.
- People who tested positive for COVID-19 within the last 30 days only need to be tested if they develop symptoms. Make sure you use an antigen test for them.